

[310_{v2}] Rigid 55 Lock Acoustic

CONDITIONS

SUBSTRATES

ACCESSORIES

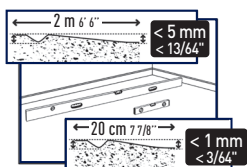
INSTALLATION

LAYING CONDITIONS

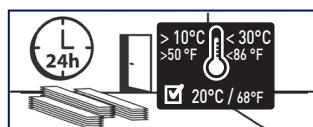
SUBSTRATE EVENNESS	Flatness requirement: < 5 mm / 2 metre ruler and < 1 mm / 20 cm ruler	Flat, clean, sound, dry and solid substrate.
STORAGE	At least 24 hours prior to installation	Store the floor covering in the room where it is going to be laid.
LAYING TEMPERATURE	+ 10°C < T < + 30°C	Ideally 20°C.
PERIMETER EXPANSION GAP	8 to 15 mm	Around the edges of the room, permanent installations or heavy equipments (e.g. columns, island stands) and door frames (8 mm minimum). Over 8 linear meters, increase progressively the perimeter expansion gap up to 15 mm for 20 linear meters. The gap must be covered by a finishing profile. Wet rooms (e.g. bathrooms): MS Polymer or PU sealant under the finishing profile.
DIVISIONS	Every 20 linear metres or surface area > 400 m ²	Each enclosed room or premises must be considered separately. Create an expansion gap : - depending on the geometry and total surface of the room - at door frames and doorways - at all existing expansion joints on the subfloor
DIRECT SUNLIGHT (SUNNY AREAS, BAY WINDOWS, SKYLIGHTS, SKYDOMES, ETC.)	Floor temperature < 60°C	Loose laying is allowed as long as the ambient temperature is regulated. In order to prevent the floor temperature from reaching excessive values up to 60°C or above, direct sunlight on the floor should be obscured by curtains, blinds or other suitable protection.
VERANDA/CONSERVATORY	Prohibited	Prohibited, irrespective of the substrate.
FIRST USE	Immediately after installation	

USAGE CONDITIONS

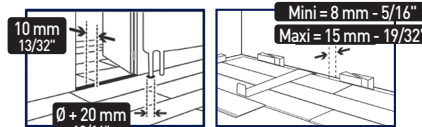
USAGE TEMPERATURE	+ 8°C < T < + 60°C	
STATIC LOADS	< 30 kg/cm ² and < 200 kg/support	Do not use rubber end caps. Use flat (not tapered) end caps without any pattern that are suitable for PVC. Use end caps on furniture legs.
CASTOR CHAIRS	PVC-compatible castors according to EN 12529	Recommendation: protective mat beneath castor chairs.



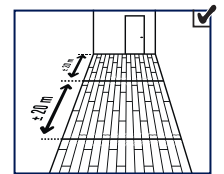
SUBSTRATE EVENNESS



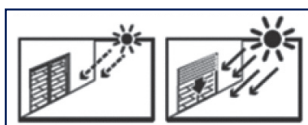
STORAGE



PERIMETER EXPANSION GAP



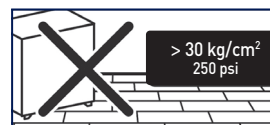
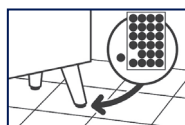
DIVISIONS



DIRECT SUNLIGHT



STATIC LOADS

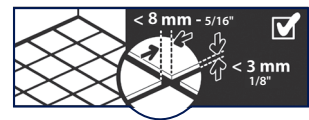
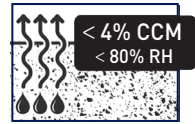


MAINTENANCE

[310_{v2}] Rigid 55 Lock Acoustic

CONDITIONS	SUBSTRATES	ACCESSORIES	INSTALLATION
------------	-------------------	-------------	--------------

SUBSTRATE		CONDITIONS For installing this floor covering
Concrete floor, painted concrete, levelling compound, cement based screed, anhydrite (calcium sulphate)-based screed	✓	Moisture content: Cement based substrate: < 4 % CCM, 80 % RH - Anhydrite-based substrate: < 0.5 %. If necessary, prepare the support and apply a smoothing compound to eliminate any irregularities
Ceramic tiles	✓	If tile joints < 8 mm wide, < 3mm deep, and < 1mm unevenness. Otherwise, apply a grouting product or levelling compound
Glued compact PVC / rubber / linoleum floor coverings	✓	After examination and repair depending on the condition of the floor covering. If more than 10% is in bad condition, complete removal is necessary followed by new substrate preparation
Glued foam backed PVC floor coverings	!	In residential areas (premises classified CEN 23-31). After examination and repair depending on the condition of the floor covering. if more than 10% is in bad condition, complete removal is necessary followed by new substrate preparation.
Textile floor covering (carpet) / textile-backing PVC floorings	✗	Prohibited
Acoustic underlayers	✗	complete removal
Glued parquet / laminated floor /floating parquet or wood based panels	✗	Prohibited (complete removal)
OSB	✗	Complete removal or lining boards
Wood-based panel flooring on joists or battens / parquet nailed on battens ventilated underneath	✓	Allowed
Water reversible underfloor heating	✓	Allowed
Underfloor heating with circulating water, max temperature 28°C	✓	Allowed
Radiant electric underfloor heating	✗	Prohibited



The preparation of the substrate must comply with the current relevant standards in the country of use.
For any information on product properties and usages, please refer to its technical datasheet: www.gerflor.com.

[310_{v2}] Rigid 55 Lock Acoustic

CONDITIONS	SUBSTRATES	ACCESSORIES	INSTALLATION
------------	------------	--------------------	--------------

TOOLS	Cutter - Tape measure - Metal ruler - Milled saw blade (e.g. Bosch T111C) Non-rebound mallet – Ref.: 94964 from ROMUS - Pull bar - Tapping block Mitre shears - Reference ROMUS: 93401 / JANSER: 237 530 000
ADHESIVES FOR DIRECT SUNLIGHT AREAS	Refer to adhesive manufacturers recommendations
DIVISIONS	ROMUS accessories
ACOUSTIC UNDESLAYER	Gerflor Acoustic 15 dB – Ref.: 17980001 – See Installation Guidelines [330] Gerflor Silence Plus 19 dB – Ref.: 59490001 – See Installation Guidelines [331]
FINISHES	Skirting Design - Ref. : 6086 / Skirting Design - MDF - Ref. : 5947 – See Installation Guidelines [504A] and [504B]. Door threshold: refer to Romus catalogue. Wet rooms (e.g. bathrooms): MS Polymer or PU sealant.

[310_{v2}] Rigid 55 Lock Acoustic

CONDITIONS

SUBSTRATES

ACCESSORIES

INSTALLATION



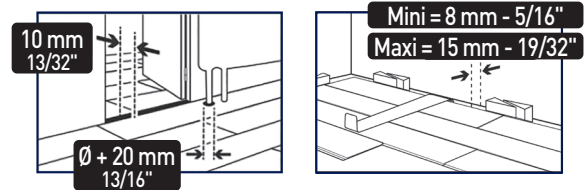
The floor covering should be examined prior to installation for any visible defects. The flooring must belong to the same production batch. If there are any visible defects, please notify GERFLOR and do not begin installation without its prior approval.

LAYOUT

- Mix the planks/tiles from several different boxes from the same series.

- The planks/tiles must be oriented in the direction of light or in the direction of traffic.

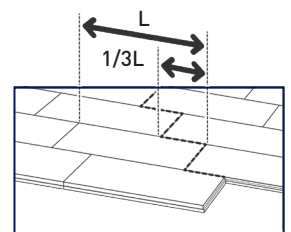
- Perimeter expansion gap: 8 to 15 mm. At room edges, fixed and permanent installations (e.g. columns, island stands) and door threshold (8 mm minimum. Over 8 linear meters, increase progressively the perimeter expansion gap up to 15 mm for 20 linear meters). The gap must be covered by a finishing profile. Heavy equipments (kitchen elements, shelves) should be installed before the flooring, and the expansion gap must be respected around the equipment's base or feet.



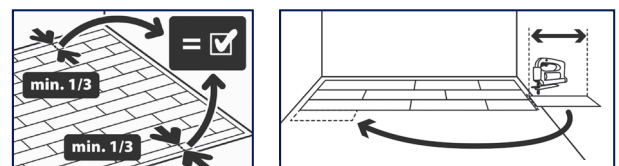
Wet rooms (e.g. bathrooms): MS Polymer or PU sealant under the finishing profile and along the water points (bath, shower tray, toilets).

- Start laying the planks/tiles in a corner of the room. Move backwards as you lay, with the grooves facing towards you.

- Offset each row ideally by one third of a plank length, or lay them with «hidden joints». In this case, offset the planks by at least 25 cm, and start the second row with the offcut from the last plank of the previous row. Avoid small cuts at the end of the (<10 cm).



Lay the tiles in staggered joint (offset by half a tile).



- Never leave tongues on the edge planks/tiles

[310_{v2}] Rigid 55 Lock Acoustic

CONDITIONS

SUBSTRATES

ACCESSORIES

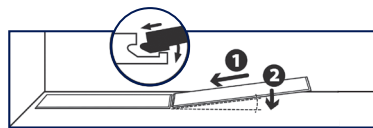
INSTALLATION

INTERLOCKING AND CUTTING OUT

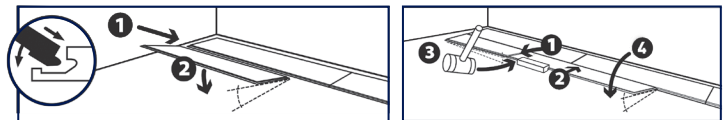
- Make sure that there are no burrs in the machined section before clipping it together.

- Interlock the planks/tiles following the schemes using a tapping block and a non rebound mallet.

First row: lay the plank at a slight angle to insert the tongue of the short side into the groove of the previous plank.

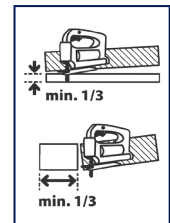


Next rows: place the first plank at a slight angle to insert the tongue of the long side into the groove of the planks in the first row. For subsequent planks, assemble the short side and then the long side, keeping the plank at an angle.



To interlock the last row, use a pulling bar.

- Peripheral cutting with a saw or a cutter using the overlapping method.



- Cutting at the base of door frames.

Use mitre shears (possibly with high leverage).
ROMUS ref: 93401 / JANSER ref: 237 530 000.

