

EDGES AND FRAMES



▶ DECOCHOC / DECOSMIC PROTECTION AND COVERING PANELS - BENDS INTO L AND U SHAPES -

Applications

Provides protection for door edges and simple frames edges against frequent impact from trolleys (corridors and entrances to healthcare facilities, laboratories...). Lateral edges are exposed to impacts from trolleys, beds... and below edges to water leaks in the door. U-bend is perfect for wet rooms such as bathrooms, sanitary arrangements, central kitchens...

Description

- Model: cut-to-size Decochoc or Decosmic* protection and covering panels with bends into L and U shapes
- Thickness: 2 mm
- Material: antibacterial and Bs2d0 fire-rated PVC, solid colour
- Surface finish: slightly textured
- Fixing: adhesive bonding with SPM acrylic glue or SPM universal mastic glue
- Colours:
 - 33 standard for Decochoc
 - 3 for Decosmic

Specification

- Description: 2 mm thick door protection and covering panel with bends into L or U for edge or frame protection (Decochoc or Decosmic as manufactured by SPM) from rigid and antibacterial PVC achieving Bs2d0 fire rating with solid colour and slightly textured surface.
- Environment: no heavy metals and no substance potentially subjected to any REACH restriction are used in its manufacture, nor PBT/BPA. The calcium-zinc

thermal stabilisation process is used. The emission level of volatile substance in inside air has been tested according to ISO 16000-6 and is very low (A+) according to the French regulation (23 March 2011 nr 2011-321 Decree and 19 April 2011 Order). 100% of the product are recyclable.

- Colour: selected by architects from manufacturer's standard range
- Installation method: glue as per manufacturer's instructions.



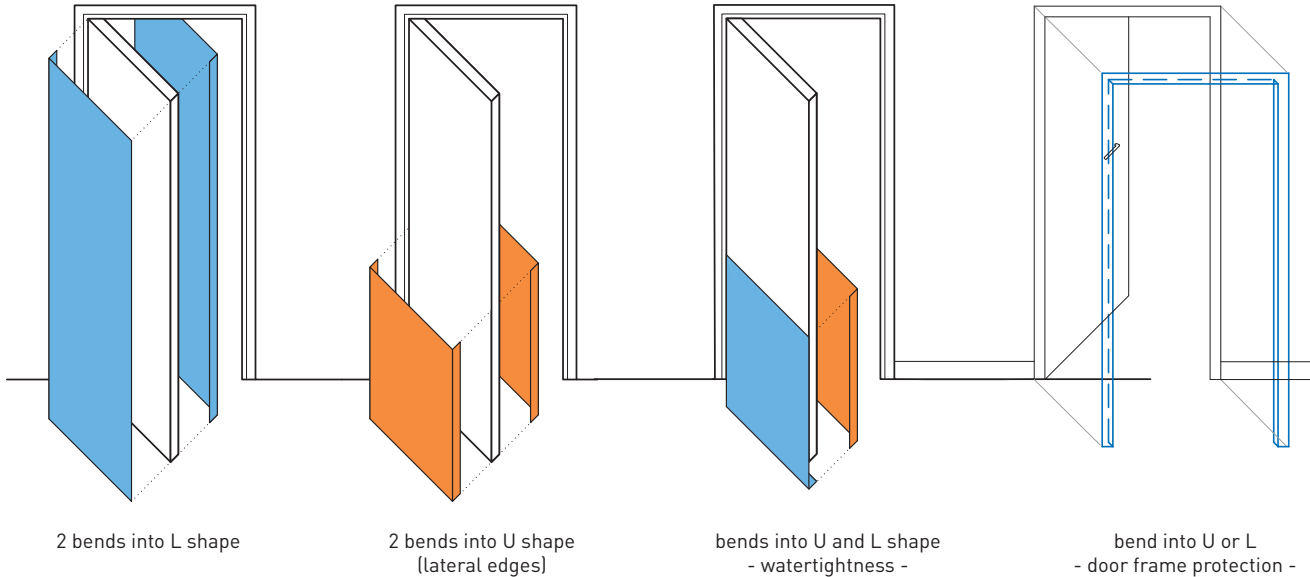
**For bend of other panels: consult us*

NEW

Decochoc
33 colours



Decosmic
3 colours



2 bends into L shape

2 bends into U shape
(lateral edges)

bends into U and L shape
- watertightness -

bend into U or L
- door frame protection -



THERMOFORMING OF DECOCHOC AND DECOSMIC PROTECTION AND COVERING PANELS*

Applications

For complex door frames which cannot be protected by L or U bends (corridors in hospitals, clinics, nursing homes...) and for rounds pillars.

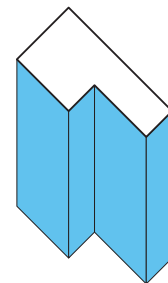
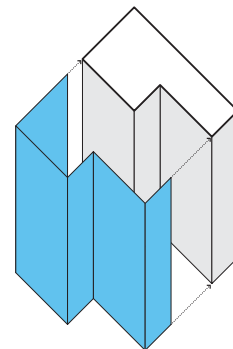
Description

- Model: cut-to-size Decochoc or Decosmic* protection and covering panels with thermoforming according to template provided
- Thickness: 2 mm
- Material: antibacterial and Bs2d0 fire-rated PVC, solid colour
- Surface finish: slightly textured
- Fixing: adhesive bonding with SPM acrylic glue or SPM universal mastic glue
- Colours:
 - 33 standard for Decochoc
 - 3 for Decosmic

*For thermoforming of other panels: consult us

Specification

- Description: 2 mm thick cut-to-size and thermoformed protection and covering panel (Decochoc or Decosmic as manufactured by SPM) from rigid and antibacterial PVC achieving Bs2d0 fire rating with solid colour and slightly textured surface.
- The level required for biocleaning should be validated for very high infectious risk areas such as operating theatres (sector 4) according to the Pasteur Institute of Lille (France). The chemical and mark resistance should have been proved on the usual cleaning products according to ISO 26987. The ease of nuclear decontamination according to ISO 8690 should be excellent.
- Environment: no heavy metals and no substance potentially subjected to any REACH restriction are used in its manufacture, nor PBT/BPA. The calcium-zinc thermal stabilisation process is used. The emission level of volatile substance in inside air has been tested according to ISO 16000-6 and is very low (A+) according to the French regulation (23 March 2011 nr 2011-321 Decree and 19 April 2011 Order). 100% of the product are recyclable.
- Colour: selected by architects from manufacturer's standard range.
- Installation sequence: glue as per manufacturer's instructions.



Thermoforming
Complex frame
protection