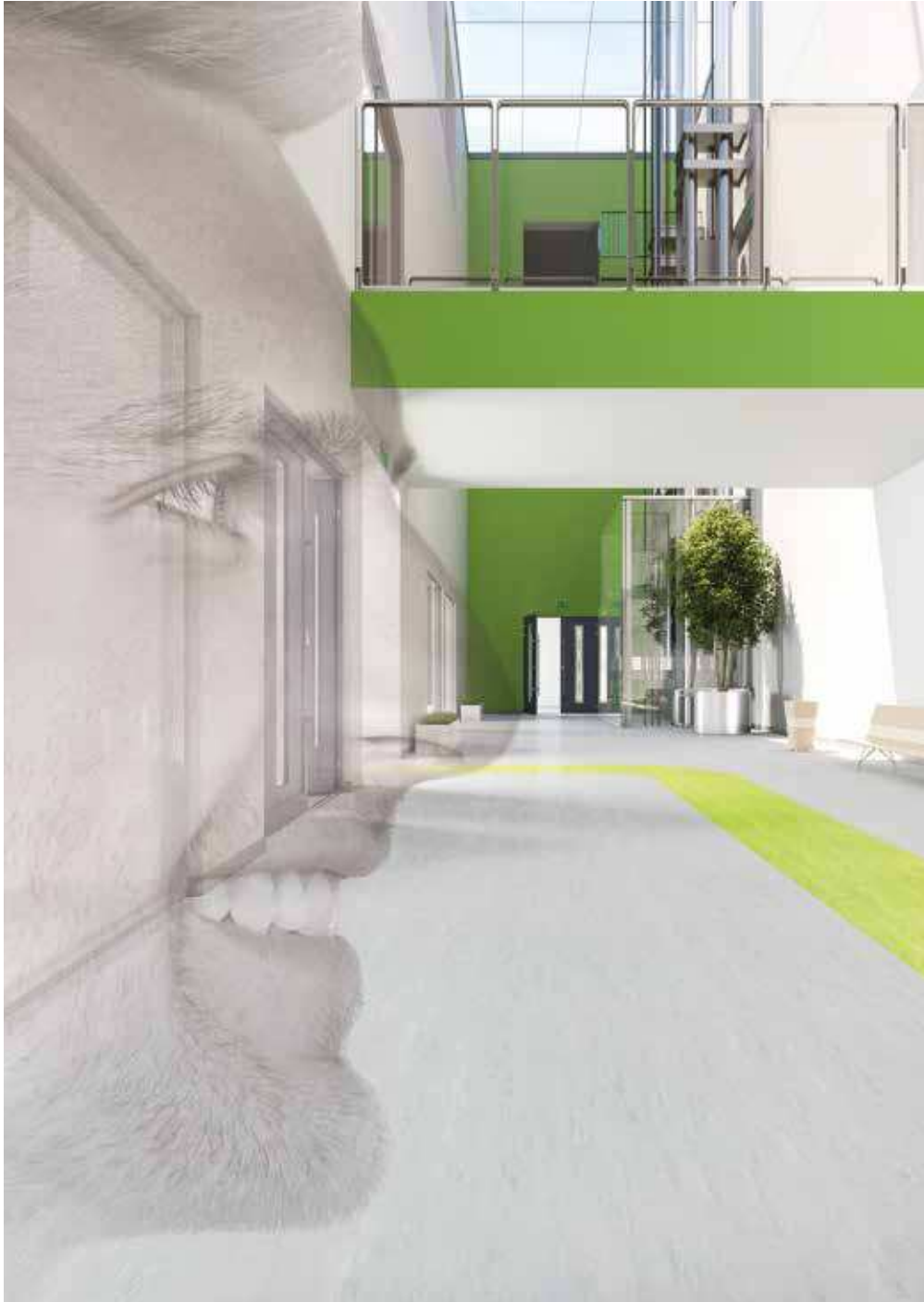




MIPOLAM CLASSIC

gerflor.com



Gerflor[®]
theflooringgroup

MIPOLAM CLASSIC



2 mm

2 mm



0125 Truffle

NCS: 6005-Y50R / LRV: 17.5



0124 Tortora

NCS: 3010-Y20R / LRV: 36.9



0014 Brown

NCS: 3010-Y40R / LRV: 39.2



0301 Beige

NCS: 1505-Y30R / NCS: 65.5



0003 Ivory

NCS: 2010-Y30R / LRV: 56.1 ▲



0006 Honey

NCS: 2020-Y30R / LRV: 46.0



All colours available as 300 x 300mm tiles upon request for a minimum order quantity of 500 sqm - ▲ Thickness: 1.5 mm - Sheet format only



0123 Corallo
NCS: 2060-Y80R / LRV: 21.2



0013 Pewter
NCS: 6502-B / LRV: 18.2



0005 Steel ▲
NCS: 3502-B / LRV: 38.3



0108 Pepper
NCS: 2500-N / LRV: 49.1



0303 Grey
NCS: 3005-B20G / LRV: 42.2



0002 Platinum ▲
NCS: 2002-B / LRV: 56.1





0127 Bermuda
NCS: 5030-B10G / LRV: 13.4



0126 Nordica
NCS: 2040-B / LRV: 34.2



0120 Borneo
NCS: 4020-G40Y / LRV: 27.5



0010 Azure
NCS: 3030-B / LRV: 32.6



0122 Pineapple
NCS: 1050-Y20R / LRV: 51.8



0121 Green Leaf
NCS: 2040-G60Y / LRV: 41.1



MIPOLAM CLASSIC

Performances and benefits



Homogeneous vinyl flooring suitable for medium to heavy duty traffic areas



Directional design available in 18 references



2 mm thickness



Flexible, easy to install and to weld

Maintenance



Ease of maintenance, no immediate use of an acrylic emulsion after installation

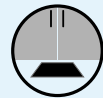
Don't forget our complementary ranges!



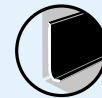
Handrails



Wall Coverings & Protections



Entrance mats



Skirtings & Profiles

EASIER MAINTENANCE - LOWER ENVIRONMENTAL IMPACT



100% RECYCLABLE

- 100% recyclable product



RECYCLED CONTENT

- 25% recycled content
- 100% REACH compliant recycled content



INDOOR AIR QUALITY

- TVOC emissions 100 times below standards (TVOC < 10 µg/m³ after 28 days)
- Comply with AgBB protocol
- No formaldehyde emission



LCA

- Eco-designed according to a product specific Life Cycle Analysis
- Product specific EPD (Environmental Products Declaration) available
- Manufactured in an Iso 14001 certified site
- Contribution to many Green Building Schemes (LEED, HQE, BREEAM...)



COMPOSITION

100% REACH compliant






- FREE of formaldehyde
- FREE of heavy metals
- FREE of solvent



WELLNESS

Health

- Walking Comfort: B Class

			MIPOLAM CLASSIC 1.5 mm	MIPOLAM CLASSIC 2 mm	
DESCRIPTION					
Total Thickness	EN ISO 24346 [EN 428]	mm	2.0	2.0	
Weight	EN ISO 23997 [EN 430]	g/sq.m	2520	3300	
Width/Length of Sheet	EN ISO 24341 [EN 426]	cm/lm	200/20	200/20	
Tile size	EN ISO 24342 [EN 427]	mm	-	300 x 300* / 608 x 608	
Number of tiles per package	-	-	-	50 / 20	
CLASSIFICATION					
Norm/Product Specification	-	-	EN ISO 10581 [EN 649]	EN ISO 10581 [EN 649]	
European classification	EN ISO 10874 [EN 685]	class	23-31	34-43	
Fire Rating	EN 13 501-1	class	Bfl-s1	Bfl-s1	
Static electrical propensity	EN 1815	kV	< 2	< 2	
PERFORMANCE					
Wear resistance	EN 660.2	mm ³	≤ 15	≤ 7.5	
Wear Group	NF 189	group	F	M	
Type Binder content	EN ISO 10581	type	II	II	
Dimensional stability	EN ISO 23999 [EN 434]	%	≤ 0.40	sheet ≤ 0.40 tile ≤ 0.25	
Residual indentation	EN ISO 24343-1 [EN 433]	mm	≈ 0.03	≈ 0.03	
Castor Chair test (type W)	ISO 4918 [EN 425]	-	OK	OK	
Thermal Conductivity	EN ISO 10456 [EN 12524]	W/(m.K)	0.25	0.25	
Colour Fastness	EN 20 105-B02	degree	≥ 6	≥ 6	
Surface Treatment	-	-	PUR	PUR	
Chemical Products fastness	EN ISO 26987 [EN 423]	class	OK	OK	
ENVIRONMENT / INDOOR AIR QUALITY					
TVOC after 28 days	ISO 16000-6	µg/ m ³	< 10	< 10	
CE MARKING					
CE	EN 14 041	-			
					

* upon special request


Product description & technical data sheet in *Dutch / French, Spanish / Portuguese, Italian, Swedish, Norwegian* on Gerflor websites.

INSTALLATION

Laying is the responsibility of the installer. Installation should be made in accordance with installation guidelines supplied and regularly updated by Gerflor's Technical Department. Installation should be carried out in accordance with local standards. Subfloor to be smooth, hard, clean and dry prior to laying. Where applicable the subfloor must incorporate an effective Damp Proof Membrane. The material must be allowed to acclimatise 24 hours prior to installation in a room temperature of between 18-24°C. All seams must be heat welded using Gerflor matching weld rod.


MAINTENANCE

Maintenance should be carried out regularly to retain the appearance and durability of the floor. The floor covering should be maintained with regular sweeping and damp mopping using a neutral cleaner, or auto scrubber machine with an appropriate pad.

 Rubber leaves indelible stains on vinyl floorings: do not use mats with rubber backing and replace tubular furniture feet with those made of PVC or polyamide. Place mats of sufficient length at entrances to reduce outside sources of dirt.

Further installation and maintenance instructions are available from Gerflor.

MIPOLAM CLASSIC, LESS SPEAKING FOR MORE ACTIONS

					
COMPOSITION 100% REACH compliant	INDOOR AIR QUALITY 100 times below standards (TVOC < 10 µg/m ³ after 28 days)	RECYCLED CONTENT 25 %	RECYCLABILITY 100 %	LCA Eco-designed according to a product specific life cycle analysis	WELLNESS Walking comfort: B class