



**CONNOR
SPORTS**

MODULOCK



Gerflor[®]

A HIGH PERFORMANCE, DURABLE, MODULAR SOLUTION

CREATE AN AMAZING SPORTS FLOOR IN THE BLINK OF AN EYE.

Delivers remarkable sports performance. An unrivalled lifetime pedigree sports surface. The ideal sports flooring for professional practice and elite play.

Modularity and specific accessories that enable a fast track installation for both permanent and temporary applications.

GREAT SPORTS PERFORMANCE4-5

HIGH DURABILITY OVER TIME..... 6-7

EASE OF INSTALLATION & REMOVAL..... 8-9

EXCEPTIONAL AESTHETICS DOWN TO THE DETAIL... 10-11



GREAT SPORTS PERFORMANCE



OPTIMUM PLAY AND INJURY PREVENTION

- ▶ A4 Classification: excellent balance between shock absorption and ball rebound
- ▶ Strips screwed to the plywood batten, strengthening the whole system
- ▶ 22 mm solid wood, providing high resistance

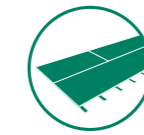


CHOSEN FOR THE MOST PRESTIGIOUS COMPETITIONS

- ▶ FIBA & IHF certifications



HIGH DURABILITY OVER TIME



THE MOST RESISTANT AND STABLE MODULAR SYSTEM

- ▶ Thanks to its unique design of 8 battens & locking points per panel, the floor remains stable and keeps its performance over time and its use



SUPERIOR FIRE PROTECTION

- ▶ Bfl-s1 certified wood



OUTSTANDING MOISTURE RESISTANCE

- ▶ Thanks to the kiln drying process, the internal wood structure remains preserved and keeps its properties, including better dimensional stability
- ▶ Made to withstand high humidity, up to 80%



WITHSTANDS MANY SANDING OPERATIONS

- ▶ 22 mm solid wood
- ▶ The single tongue and groove system allows for multiple sandings, not limited by any middle dovetail joint



REINFORCED PANELS AVAILABLE UPON REQUEST

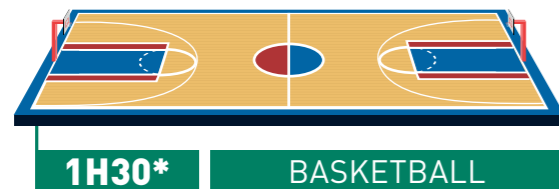
- ▶ For bleachers, basketball backstops and pathways

EASE OF INSTALLATION AND REMOVAL



A HIGH QUALITY PRE-ASSEMBLED FINISHED SOLUTION

- ▶ Easy interlocking system thanks to factory assembled panels
- ▶ Easy handling with factory 27 kg panels
- ▶ Pre-varnished panels that avoid additional finishing



**installation with a 6-people trained team*



VERSATILE SOLUTION



TRANSFORM YOUR ARENA IN A FEW HOURS

- ▶ Easy to remove and to re-install by non skilled staff
- ▶ Easy-handling of interchangeable modular panels to extend your court (from a basketball court into a handball one) systems



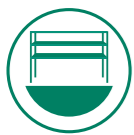
EXCEPTIONAL AESTHETICS DOWN TO THE DETAILS



Modulock Metal Access Ramp

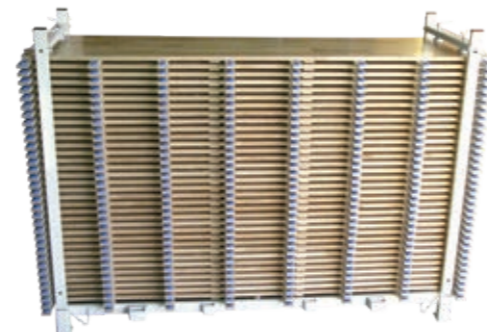


Modulock Aluminium Ramp Edges



FULL RANGE OF ACCESSORIES AND OPTIMAL STORAGE

- ▶ Tailored storage racks to store removed panels
- ▶ Heavy-duty aluminium edges, pre-attached to the panels
- ▶ Accessibility ramps
- ▶ Anchor covers



Modulock metal storage rack



Modulock plastic tongue
Modulock plastic tongue box



Modulock Round Reservation
Also exists in Square and Rectangular shapes

MODULOCK			
	STANDARD	UNIT	RESULTS
DESCRIPTION			
Product	-	-	Pre-varnished panels of finger-jointed solid beech.
Panel size	-	mm	2380 x 665
Thickness of Strips	-	mm	22
Total thickness	EN 428	mm	55
Weight	EN 430	kg/m ²	17
CLASSIFICATION			
Fire resistance	EN 13501-1	class	B _{fl,s1}
Formaldehydes emission	EN 717	class	E1
PERFORMANCE			
Shock absorption	EN 14808	%	≥ 55 (A4)
Vertical deformation	EN 14809	mm	< 5 (A4)
Sliding coefficient	EN 13036-4	BPN	80 - 110
Ball bounce	EN 12235	%	≥ 93
Abrasion resistance	EN ISO 5070-1	g	0.07
Indentation resistance	EN 1516	mm	0.04
Resistance to rolling load	EN 1569	Mm	< 0.5
Gloss value	EN ISO 2813	%	< 45

RC Lyon B 726 680 152 - JPE - 04/2021

Where Champions Play™

TARAFLEX



WE CARE | WE ACT. Our commitments for a sustainable future



CARBON FOOTPRINT*

-20 % kg CO₂ equivalent/m² between 2020 and 2025



BIOSOURCED CONTENT**

10 % by 2025



RECYCLED CONTENT

30 % by 2025



ADHESIVE FREE***

35 % by 2025



ANNUAL VOLUME RECYCLED

60,000 t by 2025

* Scopes 1 & 2 defined in the GHG protocol ** % of activity with biosourced materials *** % of activity with adhesive free solutions

Gerflor®