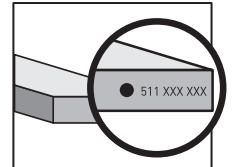


LAYING PRINCIPLE: INSIGHT X'PRESS

INSIGHT X'PRESS	PLANKS	TILES
Dimensions:	18.4 x 121.9 cm 7.25 x 48"	303 x 607 cm / 12 x 24"
Quantity / pack	8	10
M ² / pack	1.80 m ²	1.86 m ²

Before laying the flooring, it is a good idea to inspect it and to identify any problems with the appearance. Check that all the boxes belong to the same series (batch no.). If there are visible defects, please notify GERFLOR and wait to hear from them before laying the flooring.



1. AREAS OF APPLICATION

Material designed for use in premises such as homes, offices and shops corresponding to the classification of the material.

1.1. CONDITIONS FOR USE

	LAYING CONDITIONS TEMPERATURE BETWEEN 15 AND 25°C
AMBIENT USAGE TEMPERATURE	Acceptable temperature range after installation: +15° to +30°C Beyond or below these temperatures, this product must be bonded using adhesive which is resistant to extreme variations in temperature. You are recommended to install temperature regulation (air conditioner) or to stop direct sunlight from reaching the material (curtains, blinds). For these reasons, installations in areas close to bay windows or skylights (considerable temperature variation) will require the floor covering to be fixed with two-part polyurethane or acrylic adhesives such as Gerflor Clim Adhesive or Bostik Power Elastic.

1.2. INTENDED USE AND UPEC CLASSIFICATION

This flooring is intended for temperature-regulated premises.

TYPE	CONCRETE FLOOR, LIQUID SCREED, CEMENT BASE	WOODEN SUBSTRATE, CALCIUM SULPHATE- AND PLASTER-BASED SCREEDS AND LINOLEUM
Rated PREMISES	U3 P3 E2 C2	U3 P3 E1 C2
STATIC LOAD RESISTANCE	Maximum concentrated load ≤ 200 kg / support Maximum load ≤ 30 kg / cm ² .	

1.3. SUBSTRATES

1.3.1. NEW or REFURBISHED substrate requirements

The flooring must be laid on a flat, clean, sound, dry and solid substrate.

The flatness of the floor must be < 5 mm under the 2 m rule (3 mm under the 2 m rule for toppings), with no uneven areas.

Moisture content: < 4.5% for concrete floors and liquid cement screed and < 0.5% for toppings and wooden substrates.

SUBSTRATES	PREPARATORY WORK
CONCRETE FLOOR, LIQUID SCREEDS, PAINTED CONCRETE, PATCHED CONCRETE	If necessary, apply a levelling compound to eliminate any surface irregularities. Sand, dust off. Apply a primer to protect the surface from dust.
TOPPING	If necessary, apply a levelling compound to eliminate any surface irregularities. Sand, dust off. Apply a primer compatible with topping to protect the surface from dust.
PVC COMPACT TILES	If the substrate requirements are met and more than 90% of the room's surface is in a good condition, remove the defective tiles and replace them with other tiles of the same composition, or fill the area with the levelling compound. Thoroughly clean the existing floor. Otherwise, the entire flooring will have to be taken up and the substrate prepared from scratch.
PVC COMPACT ROLLS	The floor covering must be bonded in all places. Thoroughly clean the existing floor. Otherwise, the entire flooring will have to be taken up and the substrate prepared from scratch.
PVC ROLLS OR TILES WITH BACKING FOAM	The floor covering must be bonded in all places and must not exceed a thickness of 3.8 mm. Proceed as above to prepare the existing covering.
VINYL ASBESTOS	Validation in progress. Contact Gerflor's Technical Department before making any decisions.
LAYING ON FLOORBOARDS AND WOOD-BASED PANELS	THE FOLLOWING WOODEN SUBSTRATES ARE ALLOWED: Parquet nailed onto battens spaced no more than 0.30 m apart. Lining boards (19 mm) fixed to nailed and ventilated parquet. Apply primer to the panels. THE FOLLOWING WOODEN SUBSTRATES ARE NOT ALLOWED: Floorboards on joists, floating parquet, glued parquet, floating particle boards, OSB boards.
LAMINATE	Not allowed. Take up. Then prepare the substrate from scratch.
SOUNDPROOF UNDERLAYER	Not allowed. Take up. Then prepare the substrate from scratch.

LAYING PRINCIPLE: INSIGHT X'PRESS

TILING	The floor surface must not have any uneven areas, and the joints must not be recessed, otherwise, fill them with a grouting product. Clean thoroughly, then after the substrate has dried, lay the INSIGHT X'PRESS planks / tiles. (It may be necessary to apply a primer depending on the tile surface finish).
TEXTILE FLOORING (CARPET)	Not allowed. Take up. Then prepare the substrate from scratch.
Please contact us if the substrate is not in this list.	
UNDERFLOOR HEATING (floor temperature < 28°C) The regulations require: $\leq 0.15 \text{ m}^2 \times ^\circ \text{Kelvin} / \text{Watt}$	Possible
RADIANT ELECTRIC UNDERFLOOR HEATING The regulations require $\leq 0.15 \text{ m}^2 \times ^\circ \text{Kelvin} / \text{Watt}$	Not allowed
LOW TEMPERATURE WATER REVERSIBLE UNDERFLOOR HEATING The regulations require $\leq 0.13 \text{ m}^2 \times ^\circ \text{Kelvin} / \text{Watt}$	Possible

1.3.2. Preparatory work on concrete supports

Preparation:

The surfaces should be prepared with care so as to remove any soiling, laitance, treatment products or any other foreign body.

If the substrate does not meet the requirements, a patching compound must be used:

- With a substrate moisture content of < 4.5%, the grouting must meet class P3 specifications.

Crack treatment:

Treat cracks before applying a patching compound if the level difference is > 1 mm or there is a gap of > 4 mm.

Joint treatment:

Contraction joints: Treat joints before applying a patching compound.

Construction joints: Similar to cracks, same treatment.

Expansion joint: Flush joints: ROMUS profile CJ-20-5 or 3 may be suitable.

Expansion joints with overlay profile: The profile is fitted over the flooring and is secured on one side only.

2. LAYING

2.1. LAYING CONDITIONS

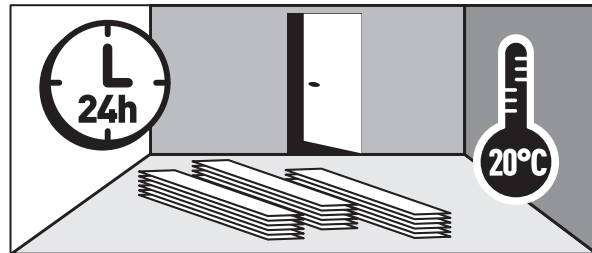
The planks / tiles must be stored in the room in which they are going to be laid for at least 24 hours before laying (minimum ambient temperature 20°C).

To avoid major colour differences or repeated designs, mix the planks / tiles from several different boxes from the same series.

The room temperature must be between 15 and 25°C.

Beyond or below these temperatures, during installation, the material may contract or dilate over time.

For these reasons, installation close to bay windows or skylights (considerable temperature variation) requires special precautions to be taken (see & 1.1).



2.2. LAYOUT

Unless otherwise specified in market-specific documents, the arrangement of planks / tiles must follow these principles:

- Each enclosed room must be considered separately.
- The planks / tiles used in one room must belong to the same batch.
- The contractor must carefully analyse the plank / tile layout to meet these requirements:

The planks / tiles must be oriented towards the wall with the main window, or lengthwise.

In corridors, the planks / tiles must be arranged in the direction of traffic.

At the edges, the width of the planks / tiles must, if possible, be the same on both sides.

At the ends of rows, the length of the planks / tiles must be greater than 1/3 of a plank.

The length of the planks / tiles and the offsets between them must be greater than 1/3 of a plank.

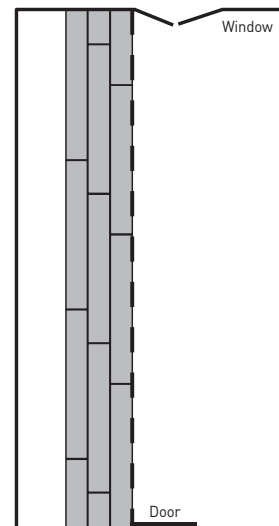
2.3. MARKING OUT THE AXIS

Determine the laying direction (the planks should preferably run in the same direction as the light entering the room).

Mark a centre line on the floor, dividing the room in two in the laying direction.

To ensure that the cuts are the same on each side, mark out the axes so that the cut planks / tiles are > 1/3 of their format in both directions.

Regularly check that the planks / tiles are parallel with, and squared up to, the walls.



2.4. LAYING PLANKS / TILES

2.4.1. TOOLS

- Chalk (chalk line)
- Ruler, cutter, cut-resistant gloves, tape measure
- 30/50 kg roller

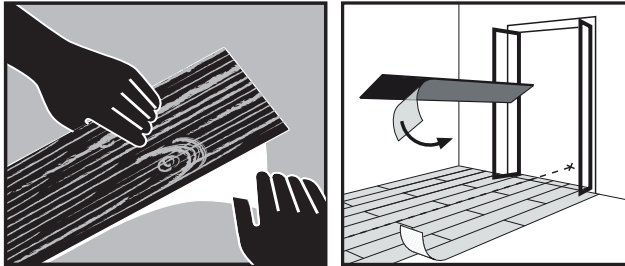
FLOORS IN BUILDINGS

LAYING PRINCIPLE: INSIGHT X'PRESS

2.4.2. LAYING METHOD

2.4.2.1. Basic principle

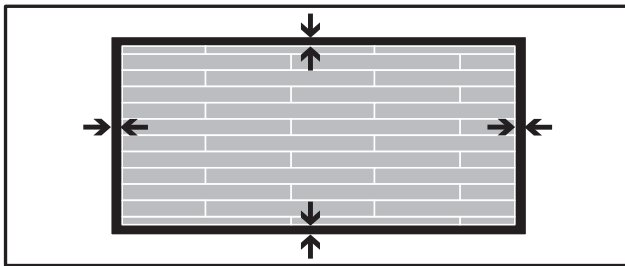
- Start laying along the longitudinal axis or across the layout.
- Pull off the protective paper.
- Lay the planks / tiles on a clean, dust-free surface.
- Use the piece cut off from the last plank / tile (if it is > 1/3 the length of the plank / tile) to start the next row.



2.4.2.2. Edges:

Direction of length / width of planks / tiles

In standard sections, the edges must be 2 mm in all places except for lengths or parts greater than 10 m where the edge must be 5 mm.



2.4.2.3. Smoothing

This must be done in two passes:

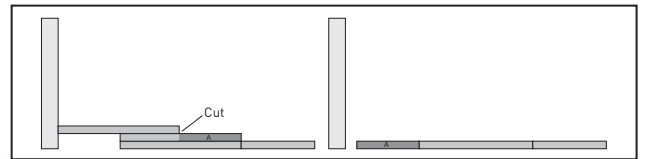
- By smoothing them out manually while they are being laid.
 - By running a (50 kg) smoothing roller over them after they have been laid.
- Concentrate on the edges and on areas which will be less walked on. Smoothing with a roller reinforces adherence of the planks / tiles over time.

2.5. CUTTING (PROCEDURE, TOOLS, ETC.):

Cutting the edges

Scribing is used for cutting the edges:

- Position the plank / tile to be cut (remove the protective paper, decorative surface visible) on top of the last installed plank/tile.
- Use the entire plank / tile as a template, removing the protective paper.
- Place it on top of the plank / tile to be cut, offsetting the plank / tile from the wall to leave the required space for the border edge.
- Mark the plank / tile to be cut along the edge of the template using a cutter equipped with a straight blade.
- Bend the plank / tile to snap it.
- Use the hooked blade to remove the burrs.
- Position the plank / tile.
- Carefully smooth over the surface with your hand before smoothing with a roller.



3. SPECIAL FEATURES

3.1. SKIRTING

If the flooring is laid before the skirting, GERFLOR recommends Gerflor's DECOR SKIRTING-type skirtings to finish the junction between floor and wall.

Position the skirtings, making sure that they are not applying too much pressure on the planks / tiles (to allow for dilation).

If the skirting is already installed, GERFLOR recommends fitting a quadrant onto the wooden skirting to finish the junction between floor and wall.

3.2. EXPANSION JOINTS IN SUBSTRATE

- Flush joints: ROMUS profile CJ-20-5 or 3 or equivalent may be suitable.
- Joints with overlay profile: The profile is fitted over the flooring and is secured on one side only.

3.3. ENDS

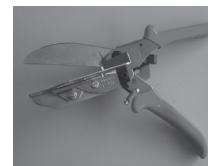
ROMUS sells different types of threshold bars depending on the required finish type

3.4. DOOR FRAMES

Use high leverage gripper shears to cut the planks / tiles.

For cutting around door frame bases and areas which are difficult to access.

Available from Gerflor



Mitre shears
Reference:
Gerflor:
0566 0001

3.5. CONNECTION TO ADJACENT ROOMS

To join two rooms with INSIGHT X'PRESS, GERFLOR recommends using a threshold profile with concealed fixings, covering the edges that were left exposed when the flooring was laid. Various thresholds are available from manufacturers such as **ROMUS Z threshold** which caters for materials with different levels.

4. FIRST USE

The flooring can be used as soon as it is laid. Do not use rubber feet on your furniture. We recommend manual washing with a very small amount of water or use of a wet vacuum cleaner to prevent water from penetrating between the joints.

5. REPAIRS

If a plank / tile needs to be replaced:

- The damaged INSIGHT X'PRESS can be easily removed as the planks / tiles are not interlocked
- Clean the surface
- Replace with a new plank / tile.

We recommend keeping a few planks / tiles from the installed series to use as replacements in the future.