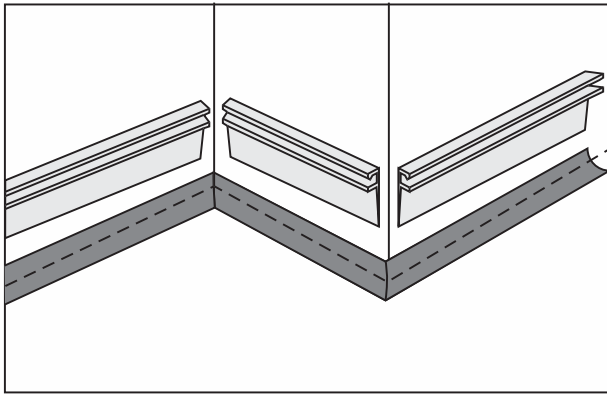
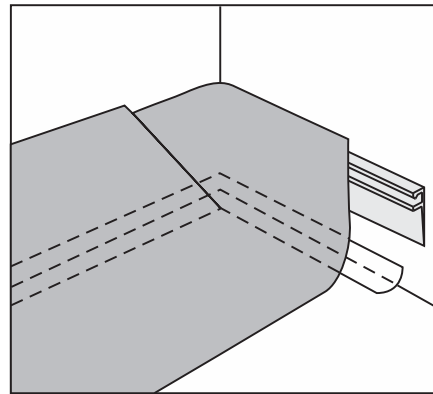


# COVING LAYING TECHNIQUES

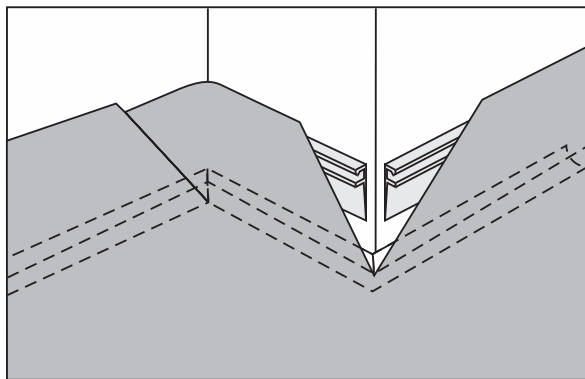
Maximum 15 cm



Positioning cove formers and the finishing clip base.

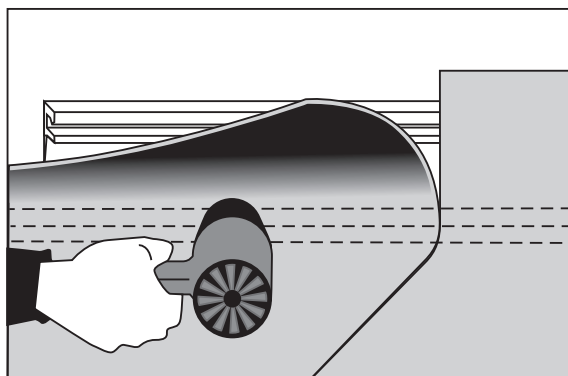


Positioning, cutting and gluing the flooring in the internal angle (45° cut).

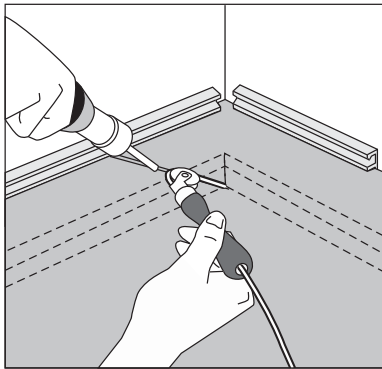


And in the EXTERNAL angle (V cut)

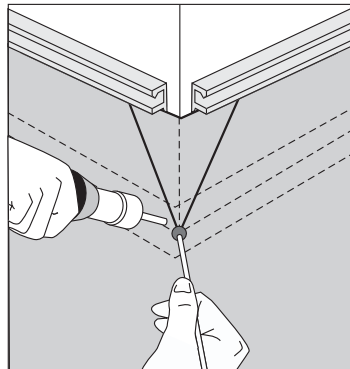
**Pay attention on the waiting time with solvent contact glue. A short waiting time can provoke a colour change.**



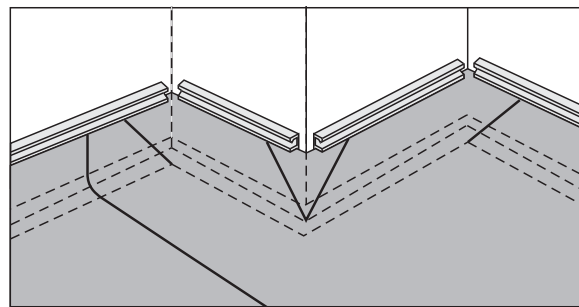
Bonding and fixing the material onto the cove former.



Welding on angles with a roller or a speed nozzle



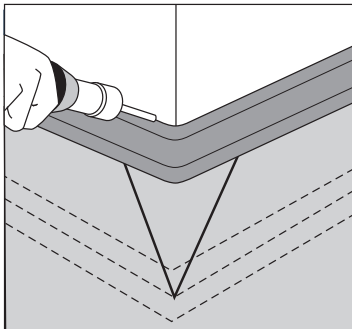
Finish the angle with a pressure ball.



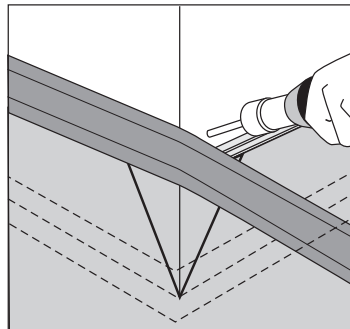
Welding at internal and external angles and coving.

### POSITIONING THE FINISHING CLIP

#### External angle

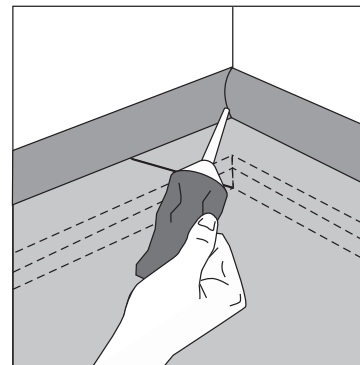


1 - Clip the profile while heating it to turn the corner (temperature  $\approx 150^{\circ}\text{C}$ ).



2 - Heat the flexible strips (temperature  $\approx 150^{\circ}\text{C}$ ) to shrink it and follow perfectly the angle.

#### Internal angle



Mitre cut and cold weld.