

# LAYING TECHNIQUES FOR ATTRACTION Fast track tiles

All tiles are laid in the same direction



Ambient temperature



Floor temperature

In accordance with the local standards

**Always check the material before starting work in order to avoid problems with visible defects.**  
**Please inform GERFLOR of any visible defects discovered and do not start work without their approval.**

## • 1 - USAGE

### 1.1 - Purpose

These floor coverings are intended for: shops, clothes shops, supermarkets, schools, hospitals (i.e., corridors, offices, etc, but not patient treatment areas) in the following categories:

### 1.2 - Installation type based on type of premises and static/dynamic loads

Do not install tiles from different batches in a same area (room)

Installation type	LOOSE LAY – separable EVERY 500m <sup>2</sup> provided the temperature range (maximum value) is less than 20°.		
	GLUED DOWN – where the temperature range is more than 20°C. Use a 2-part glue at 350-400g/m <sup>2</sup> * <small>* We recommend full-surface gluing with a 2-part epoxy-polyurethane glue using a spatula with a B1 blade (by TKB). * Follow the adhesive manufacturer's instructions when choosing glues and spatulas. Specific glue-down layouts may also be designed for use in sensitive areas such as turning points or areas of heavy traffic.</small>		
Edge expansion and expansion gap	Usually the edge clearance is 0.1%. Underneath bay windows, add 10mm in addition to the usual edge clearance. This gap must be mastic-sealed and covered with a finisher strip. Expansion gaps in a surface area must not be covered with ATTRACTION tiles.		
	LOW TRAFFIC	HEAVY TRAFFIC	
Level of Traffic	Premises with chairs on castors (e.g., offices) or areas with hand trolleys but not pallet trucks (e.g. hospital corridors). Maintenance limited to single brushing.	Other premises that ordinarily experience heavy wheeled traffic within the limits below. Maintenance limited to powered floor cleaners.	
Static loads			
Maximum point load (in kg)	200 kg	500 kg	
Maximum pressure tolerated by the floor covering (in kg/cm <sup>2</sup> )	30 kg / cm <sup>2</sup>	40 kg / cm <sup>2</sup>	
Dynamic loads	N/A	Wheeled movement	
Type of tyre or wheel	As these premises do not see heavy wheeled traffic, there are no requirements	Polyurethane or material of similar hardness	Solid or pneumatic tyres. Such equipment should not be left standing on ATTRACTION tiles in order to avoid colour changes. It must only be used to stock shelves
Total weight/wheel (1)		< 600 kg	< 1000 kg
Impact pressure		40 kg / cm <sup>2</sup>	Sans objet
Total weight		< 1800 kg	< 3000 kg
Speed (2)		< 5kph	< 10kph
Mechanical handling		Manual trolleys, manual/electric pallet trucks with operator, rated at 1300kg	

Follow the adhesive manufacturer's instructions when choosing glues and spatulas. Specific glue-down layouts may also be designed for use in sensitive areas such as turning points or areas of heavy traffic.

(1) Twin wheels count as one where the separation (track/wheelbase) is <200mm. Metal wheels are prohibited.

(2) Electric or engine driven handling equipment may cause changes due to heating of the tyre tread. Check the suitability of such equipment when selecting floorings, e.g., anti-skid braking systems

Always check the material before starting work in order to avoid problems with visible defects.  
Please inform GERFLOR of any visible defects discovered and do not start work without their approval.

### 1.3 - Types of premises and use

This floor covering is intended for use in sales and related areas (stores, back-office, food stores, etc) but not damp areas (showers, etc).

It is intended for temperature-controlled environments (shops, malls, etc).

Flatness /relative humidity			
Relative humidity	92% R.H**	Flatness	
		< 10 mm	> 10 mm
	< 4,5% (CCM)*	Direct lay	Ordinary filler
	4,5 à 7% (CCM)*	Direct lay	Special filler

\*Carbide Control Moisture

\*\* ASTM F 2170 / BS 8203

## • 2 - SURFACES

### 2.1 - Preparatory work on new floors

#### • Mechanical preparation:

Surfaces must be thoroughly cleansed of any soiling, cement wash, concrete compounds or other foreign bodies.

#### • Dealing with bumps and hollows:

Grind or sand down any bumps.

Remove dust with an industrial vacuum cleaner

Fill in any small hollows with P45 or P45R filler.

#### • Dealing with cracks:

All cracks must be identified beforehand on any type of floor. They may be ignored where they have no stepped ridges and are < 3mm wide.

#### • Joints:

**Shrinkage seams:** If the gap is < 4mm, they can be ignored.

**Expansion seams:** After thorough cleaning, expansion seams may be left. Stopper strips, with or without overlaps, should be placed either side of the seam.

**Building seams:** As with cracks, they may be ignored if the gap is < 3mm wide.

#### • Localised filling:

It may be necessary to use areas of filler/stopper, especially where the floor is insufficiently flat or has a poor surface finish.

### 2.2 - Repaired surfaces – surface types

	Plastic floors		Resin floors		Tiled floors		Carpet
	Flatness < 10 mm	Flatness > 10 mm	Flatness < 10 mm	Flatness > 10 mm	Flatness < 10 mm	Flatness > 10 mm	Not permitted
Current covering retained: < 10% of area damaged	Install on top	Local filling	Install on top	Use epoxy resin/sand mortar to correct flatness	Install on top after dealing with any ridged seams	Treat the tiles with primer and filler	Remove
Current covering removed: > 10% of area damaged	Remove						

• It is possible to install over bitumen coating where the flatness is < 10mm under a 2m rule. Beyond that, cut back any bumps in an appropriate way. We would advise against the use of non-shrinking resin.

#### Special case: heated floors

Installation is possible on radiant heated floors where the floor's flatness is < 7mm/2m. The tiles, however, must be glued fully over their entire area. Installation is also possible on traditional storage heated floors. The tiles, however, must be glued fully over their entire area.

### • 3 - INSTRUCTIONS

**Important:** Use tiles in batches and do not mix up the batches

#### 3.1 - Layout designs

Layouts should be designed by the installation company based on the constraints at each site but respecting the following principles:

- Tiles should be arranged such that the cut edge tiles are balanced (as close as possible to 1/2 tiles)
- Tiles near access points or heavy traffic should be larger than 1/2 tiles.

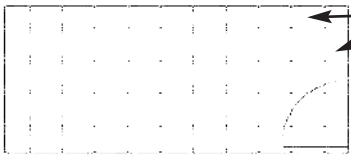
These constraints should be reviewed at the time of actual installation:

- Either by placing the first tile against the guidelines
- Or by placing it over the guidelines.

Lay down all the tiles in the same direction with respect to the arrows shown on the back of the floor coverings.

**LAYOUT**

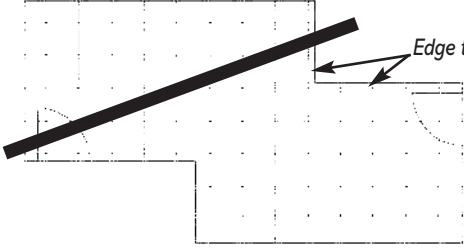
**1 - General concept**



*Cut tiles balanced around the edges and at least 1/2 tile wide*

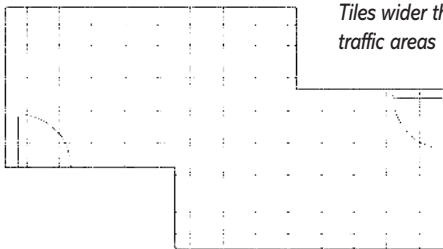
**2 - Complex shape floors**

Poor layout: some of the tiles in areas of heavy traffic are much smaller than 1/2 tiles (see drawing 3 below)



*Edge tiles less than 1/2 tile wide*

**3 - Improved layout**



*Tiles wider than 1/2 tile provided for heavy traffic areas*

#### 3.2 - Dividing up the area

Expansion gaps in a surface area covered with ATTRACTION tiles should match any divisions in the floor surface (slab/screed).

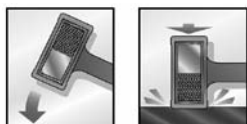
#### 3.3 - Edge clearances

Usually the edge clearance is 0.1%. Underneath bay windows, add 10mm in addition to the usual edge clearance. This gap must be mastic-sealed and covered with a finisher strip.

#### 3.4 - Seating method (procedure, tools, etc)

The tiles are seated using a soft-faced mallet

- The tiles to be seated are arranged against the existing tiles and bedded in from the corner towards the side.
- Position all the tiles in the same direction with respect to the arrows shown on the back of the floor covering.



#### TOOLS REQUIRED

Box cutter, metre rule, measuring tape, mallet

	GERFLOR	JANSER	ROMUS	WOLFF
Rubber mallet	0530 0001	262 468 000	94 959	731 470 000
Anti-rebound mallet	See manufacturer's catalogues for part numbers			

#### 3.5 - Tile cutting (procedure, tools, etc)

For easier cutting, we recommend heating the material with a hot air paint-stripper. This avoids using a jig-saw.

#### 3.6 - Localised gluing

This is used:

- Around the entries to a shop's stores
- Around entry doors
- On sloping areas (access ramps, etc)
- In areas where mechanical handling equipment will be turning.

## • 4 - SPECIAL SITUATIONS

### 4.1 - Skirting

Use Gerflor's VYNAFLEX or flexible 'Plinthes Souples' to provide a finish between floors and walls.

### 4.2 - Floor expansion joints

#### • Seams with out stepped ridge:

Use COUVRANEUF PVC banded RM20-5 profile strips to cover the seam.  
Cut loose-lay tiles along the seam and weld to the flexible seaming.

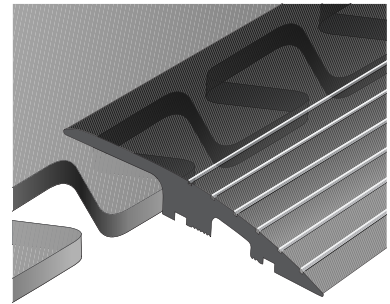
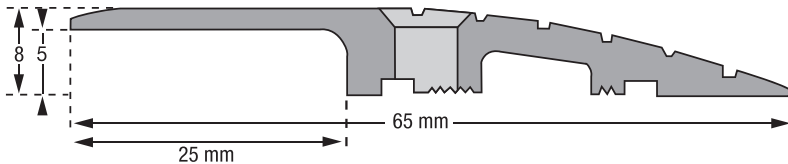
#### • Seams with a covering profile strip:

The profile strip is fitted over the floor covering and attached on one side only.

### 4.3 - Ridges and door ramps

Use H 205 profile strip from GERFLOR

H205 profile finisher strip  
(for heavy traffic, damp areas)



### 4.4 - Cutting round door frames and special points



For cutting round door frames  
and hard to access areas  
(available from Gerflor)

Moulding shears – Part Nos

Gerflor : 0566 0001 / Janser : 237 530 000

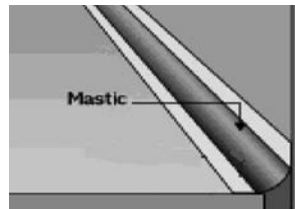


For cutting round door frames  
and hard to access areas

Moulding shears with mitre guide  
Janser : 262 284 000

### 4.5 - Applying mastic edge seals

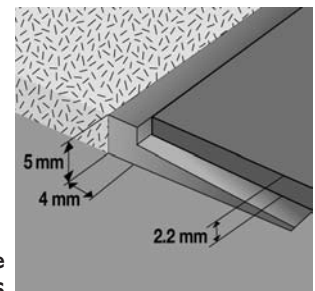
We recommend using a polyurethane or hybrid (MS polymer) mastic in the edge clearance in order to prevent the ingress of water, etc.



Edge clearance, covered by a moulding

### 4.6 - Joints with adjacent coverings

Depending on the type of covering next to the ATTRACTION tiles, use a suitable profile strip from the Gerflor range.



P1509 Connecting profile  
Part No. 0496

### 4.7 - Joints with different colour tiles

The joint can be made by seating the different colour tiles together (the more robust solution) or by a sharp or round-edge cut and welding (the more aesthetic solution).

## • 5 - COMMISSIONING

- For normal pedestrian traffic, allow 24 hours after installation.
- For wheeled traffic, allow 72 hours after installation
- Do not use rubber furniture feet

## • 6 - REPAIRS

In the event of damage to a tile:

- Cut out one dovetail or lift out the tile with a hooked or a straight blade
- Lift out the dovetails
- Replace the tile with a new one, keeping the same fitting direction.